

# How to use Jetcast Server software

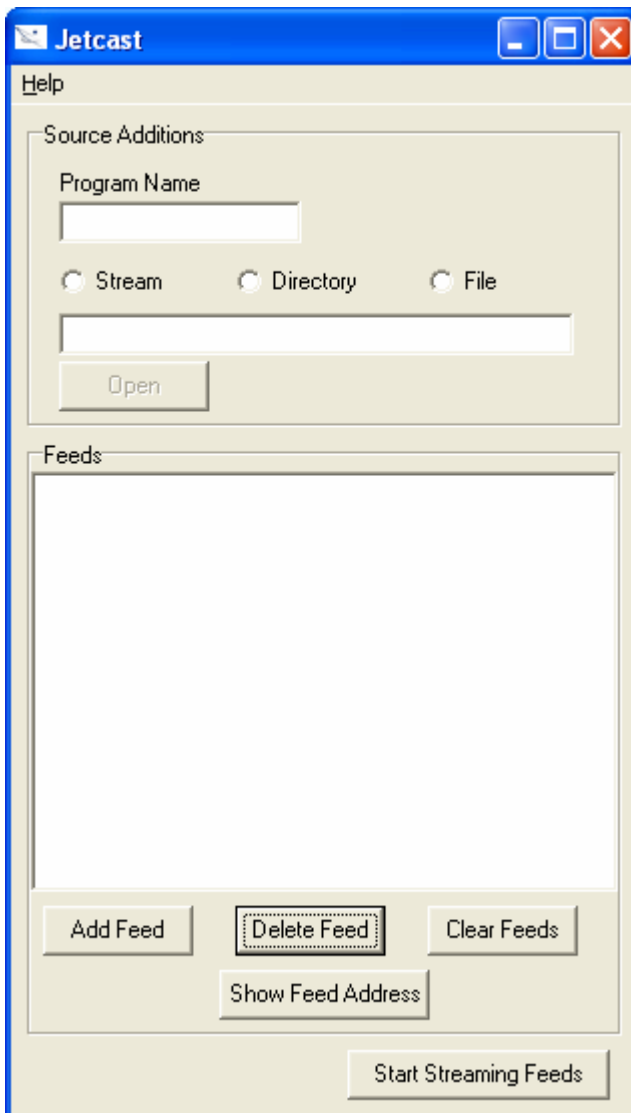
## Step by Step

### STEP # 1

Create a Jetcast Channel using the jet:// network!

Go to your Desk Top on your PC and locate the Jetcast Streaming Server Icon.

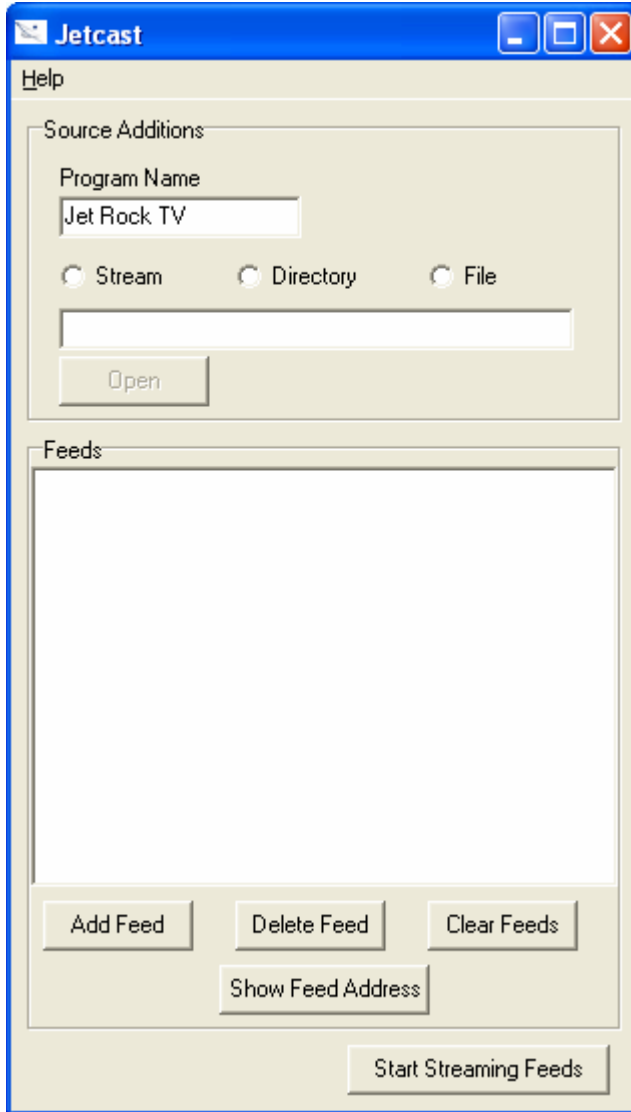
**Double Click the Icon to start.**



### STEP # 2

**Name the Channel in the "Program Name" box in Source Additions.** (In this case

“Jet Rock TV”).

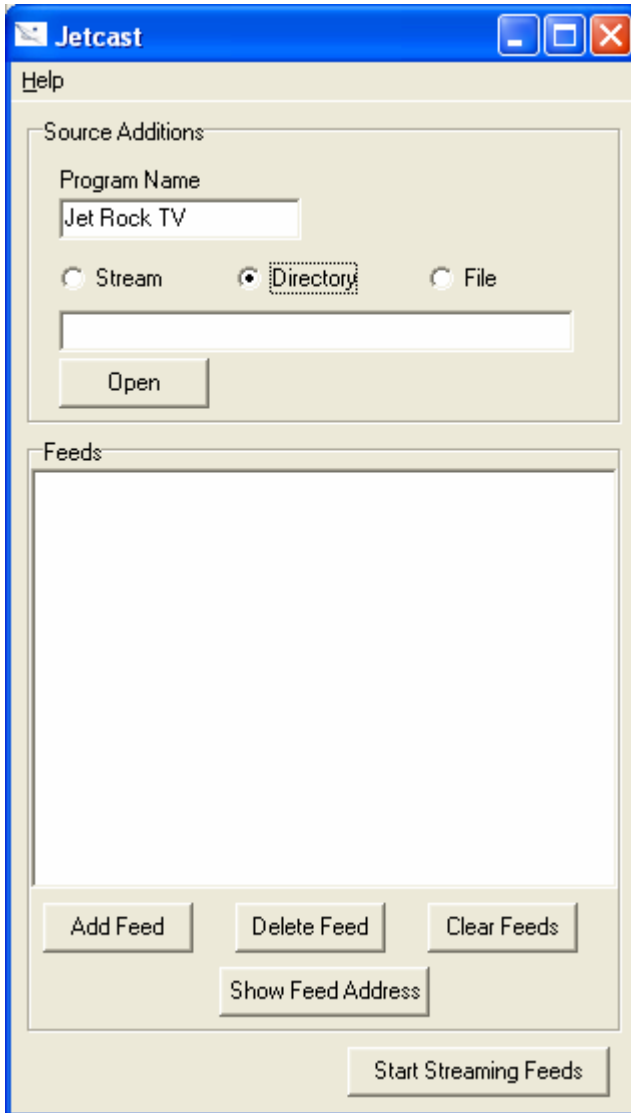


### STEP # 3

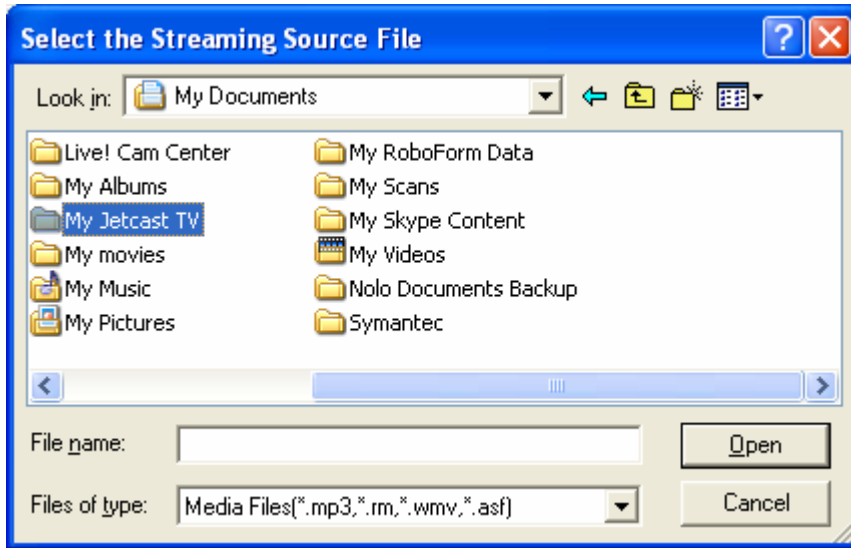
**Click on one of the following for Stream, Directory or File in Source Additions.**

- (A) Stream = If you already have a unicast stream using mms:// or http://.
- (B) Directory = If you have a directory of files. Jetcast creates the looped play list.
- (C) File = If you want to broadcast a single file and have it looped. (wmv, rm, asf).

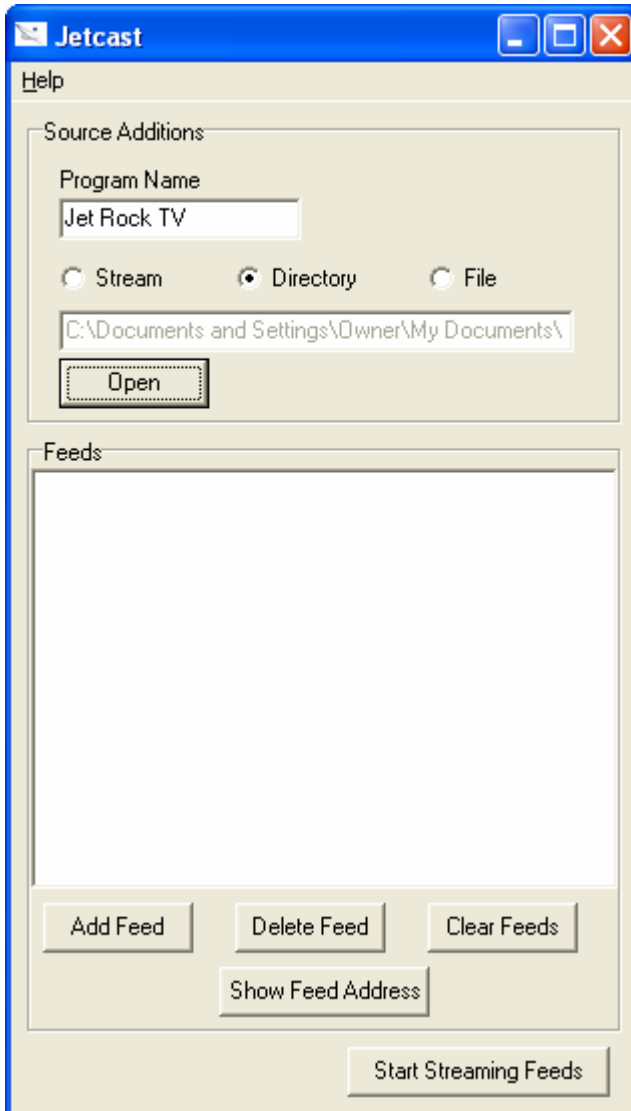
In this case, Directory is Selected.



**Click the Open button.** Select the Directory you want to use. (in this case “My Jetcast TV”).

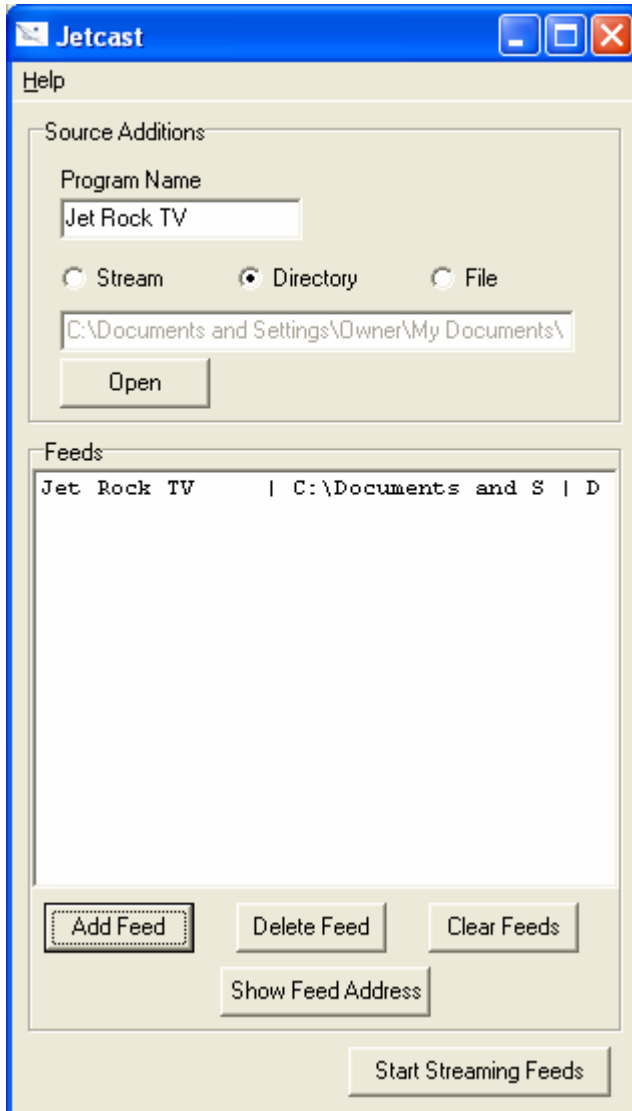


**Click “Open” button to display the Play List on the Line below.**



## STEP # 4

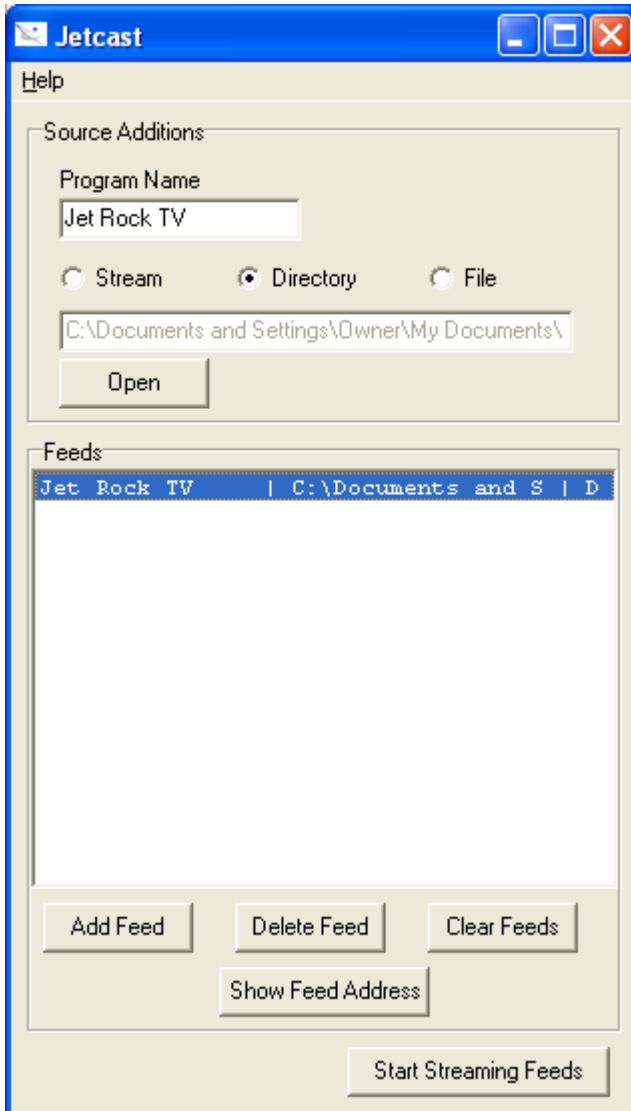
Click "Add Feed" button.



You will now see the Feed in the Feeds section.

## **STEP # 5**

**Highlight the feed listed.** (You can have up to 8).

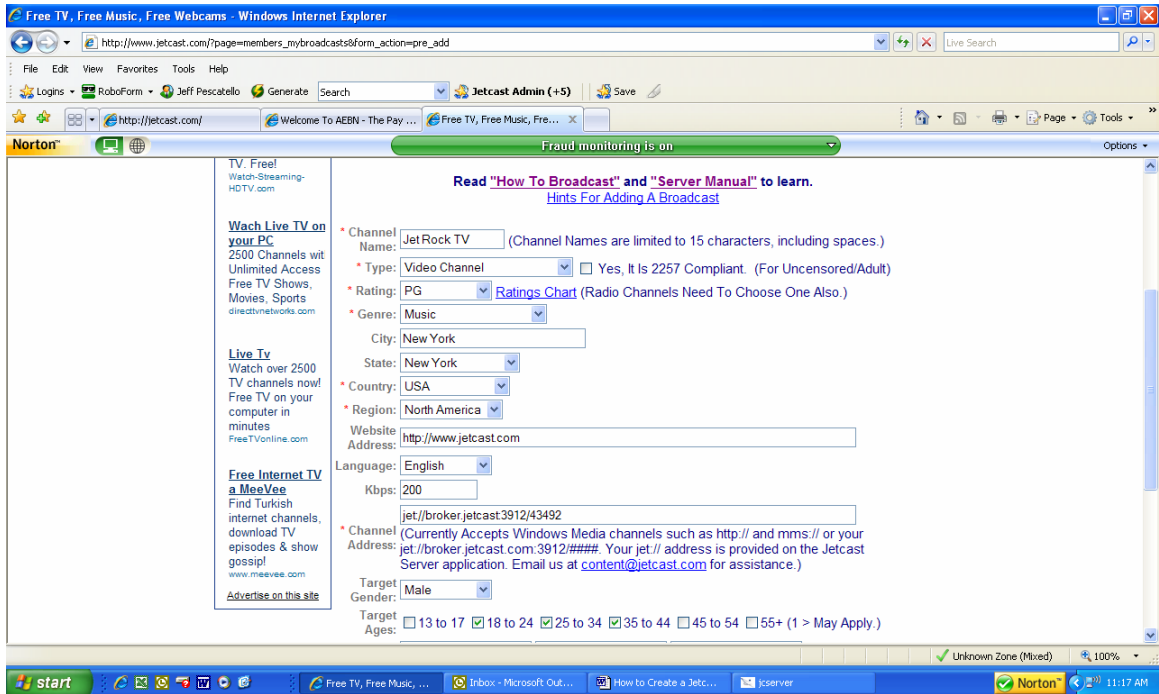


Click “Show Feed Address”. (In this case jet://broker.jetcast:3912/43492)



## STEP # 6

Enter this address in your Add a Broadcast form “Channel Address” on [www.jetcast.com](http://www.jetcast.com).



## STEP # 7

Click the Start Streaming button at the bottom of the form.

A DOS window pops up for the stream. To stream and save bandwidth, this needs to always be on. The Jetcast Server software and its functions will not over use and clog your PC/system. It is non-intrusive.

```

C:\> sp-so.exe
GLOBAL downloadRate=34913      dnSum=71329
$LEEEEEEP:250ms
$LEEEEEEP:250ms
$LEEEEEEP:250ms
$LEEEEEEP:250ms
$LEEEEEEP:250ms
$LEEEEEEP:250ms
sps0_block_segment NEW segment:buf len=30000 blklen=15000 nblock=2 spdata->blockN
extGenerate=82241
$LEEEEEEP:250ms
$LEEEEEEP:250ms
$LEEEEEEP:250ms
$LEEEEEEP:250ms
sps0_block_segment NEW segment:buf len=24000 blklen=12000 nblock=2 spdata->blockN
extGenerate=82243
GLOBAL downloadRate=26328      dnSum=125381
$LEEEEEEP:250ms
$LEEEEEEP:250ms
$LEEEEEEP:250ms
$LEEEEEEP:250ms
$LEEEEEEP:250ms
sps0_block_segment NEW segment:buf len=24000 blklen=12000 nblock=2 spdata->blockN
extGenerate=82245
$LEEEEEEP:250ms
$LEEEEEEP:250ms
$LEEEEEEP:250ms

```

**You have now created your Jetcast Channel.**

**We need to test it to make sure it works, please send us an e-mail to [content@jetcast.com](mailto:content@jetcast.com) to let us know it is started. Once we confirm it, we will send you an e-mail letting you know your channel is up.**

**Please let us know if we can help you further.**

**The Jetcast Team.**